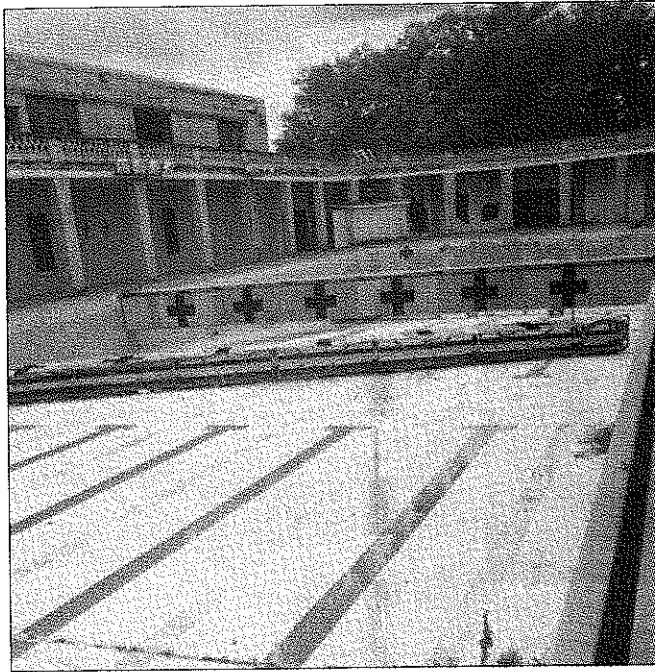


living guide CONTENTS



LSU: LIFETIME OF MEMORIES ON ONE CAMPUS

University students share stories about what makes college one of the most memorable times of their lives, see page 8.

lsu living

LSU Living is a special section of The Daily Reveille.

THE DAILY REVEILLE

B-16 Hodges Hall • Baton Rouge, La. 70803

DANIEL McBRIDE LSU Living Editor

JUSTIN FRITSCHER Editor-in-Chief

KYLE WHITFIELD Managing Editor

GAREZIA RANDLE News Editor

DANIEL McBRIDE Asst. News Editor

TYLER BATISTE Sports Editor

JAY ST. PIERRE Chief Copy Editor

NEAL HEBERT Opinion Editor

REBEKAH ALLEN Assoc. Managing Editor

MATT VINES Assoc. Managing Editor

ADAM ROGERS Photo Editor

MICHAEL MIMS Entertainment Editor

MARK MACMURDO Editor of Online Media

TYLER GAMBLE Reveille Radio Director

DONNA WEBER Advertising Sales Manager

Newsroom (225)578-4810 • Advertising (225)578-6090

EATING HEALTHY NOT DIFFICULT

Ramen noodles and fast food are not the only dining options available to University students, see page 2.

BAD ROOMIES = BIG PROBLEMS

Bad roommates are easy to find, but getting rid of them may seem like a daunting task. Find out how to avoid the problem, see page 3.

MYTH BUSTERS

Do students who get hit by a bus on campus get free tuition? The answers to this and other urban legends can be found inside, see page 5.

THE SCIENCE OF STUDYING

Entering college can be a scary experience, Center for Academic Success offers tips to smooth transition from high school, see page 7.

SCHOOL WORK THAT PAYS

The University offers numerous on-campus jobs for students; some pay well and often provide valuable experience, see page 10.

OFF CAMPUS TROUBLES

Living off campus poses problems for University students looking to get the full college experience, see page 11.

TILL DEATH DO US APARTMENT

More unmarried couples are living together, and living with your special someone is less stigmatized than it once was by many, see page 13.

DIFFERENT FOLKS, DIFFERENT STROKES

Visit lsureville.com to read about ways to appreciate, understand students from different cultures.

PHOTO CREDIT

PHOTO BY ADAM ROGERS/ THE DAILY REVEILLE

University students walk down one of the two Indian Mounds on April 9. The Indian Mounds are thought to be more than 5,000 years old.